



2024



NOT JUST A  
HOME CINEMA

A REAL CINEMA  
AT YOUR HOME



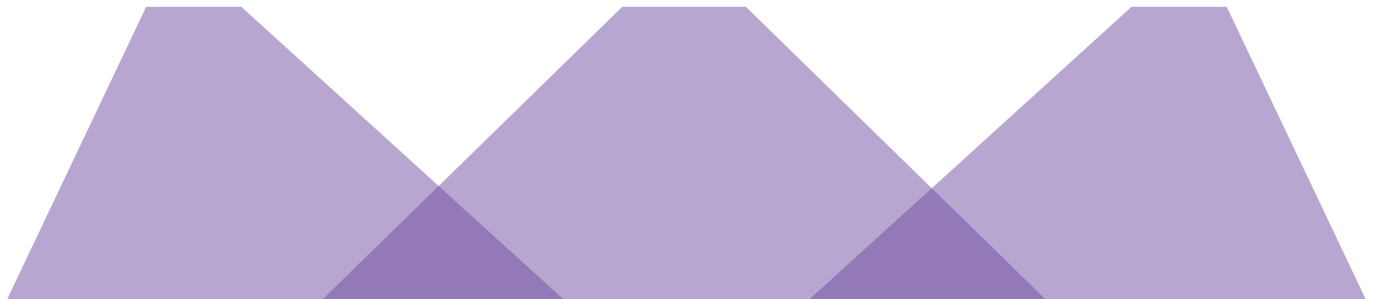
# MAG THEATRON

MAG Theatron brings the next level of professional cinema solutions designed especially for compact premises, also known as “Home Theatres”.



A brand new series of MAG Audio – a globally renowned & leading manufacturer of professional sound systems used in numerous movie theaters and music venues all over the world: International Cinema Technology Association (ICTA): World’s Best Cinema Hall of 2018 – Sphera in Athens, Greece, and Cannes International Film Festival.

# ROOM PRECISION COVERAGE CONTROL

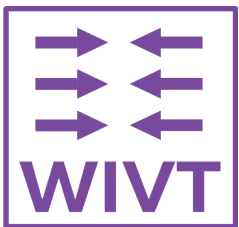


Experience unparalleled simplicity and convenience with MAG Theatron main speakers, designed to elevate your home cinema with Precision Room Coverage Control technology. Each speaker is meticulously crafted for optimal sound dispersion, featuring uniquely tailored left, right, and center speakers that direct audio precisely to the listening area while minimizing unwanted reflections from walls. The innovative skewed dispersion of the left and right speakers ensures that sound is perfectly aligned with the listening position, even when the cabinets are flush-mounted on the wall.

Every triad set is hand-selected to guarantee a harmonized response across all speakers, creating a flawless, seamless audio array that delivers a consistently immersive experience throughout the entire frontal cinema area. With MAG Theatron, immerse yourself in sound that is as precise and refined as your viewing experience demands.

# WOOFER INVISIBLE VENT TECHNOLOGY

Say goodbye to vent noises and screen movement caused by airflow—those disruptions are a thing of the past! Introducing the revolutionary Woofer Invisi Vent Technology seamlessly integrates into the design of our main speakers to provide an immaculate listening experience. These expertly crafted vents harmonize effortlessly with the direct speaker flow, delivering a perfectly aligned sound front that enhances the clarity and impact of every note.



With deep, precise, and powerful bass each woofer fills your room with cinematic sound, free from the distractions of vent noise, thanks to the generous sizing of the vents.



## Polycomp© – anti-resonance technology

Experience superior sound with our speakers' composite cabinets, crafted using our exclusive Polycomp© hybrid anti-resonance technology. By combining plywood, MDF, and polyurethane, we achieve unmatched geometric precision and a seamless front panel. This innovative design eliminates unwanted resonance, delivering crystal-clear audio with every note. Enjoy the perfect blend of strength, precision, and acoustic excellence in your home cinema.

## Midrange phase plug

The M15 main speaker line introduces a dedicated mid-range driver with an elliptical phase plug, setting a new standard for clarity and precision in the vocal range. Experience unparalleled audio fidelity with enhanced voice detail and accuracy, elevating your listening experience to exceptional levels.



# POWERTECH TO MATCH YOUR **AMBITION**

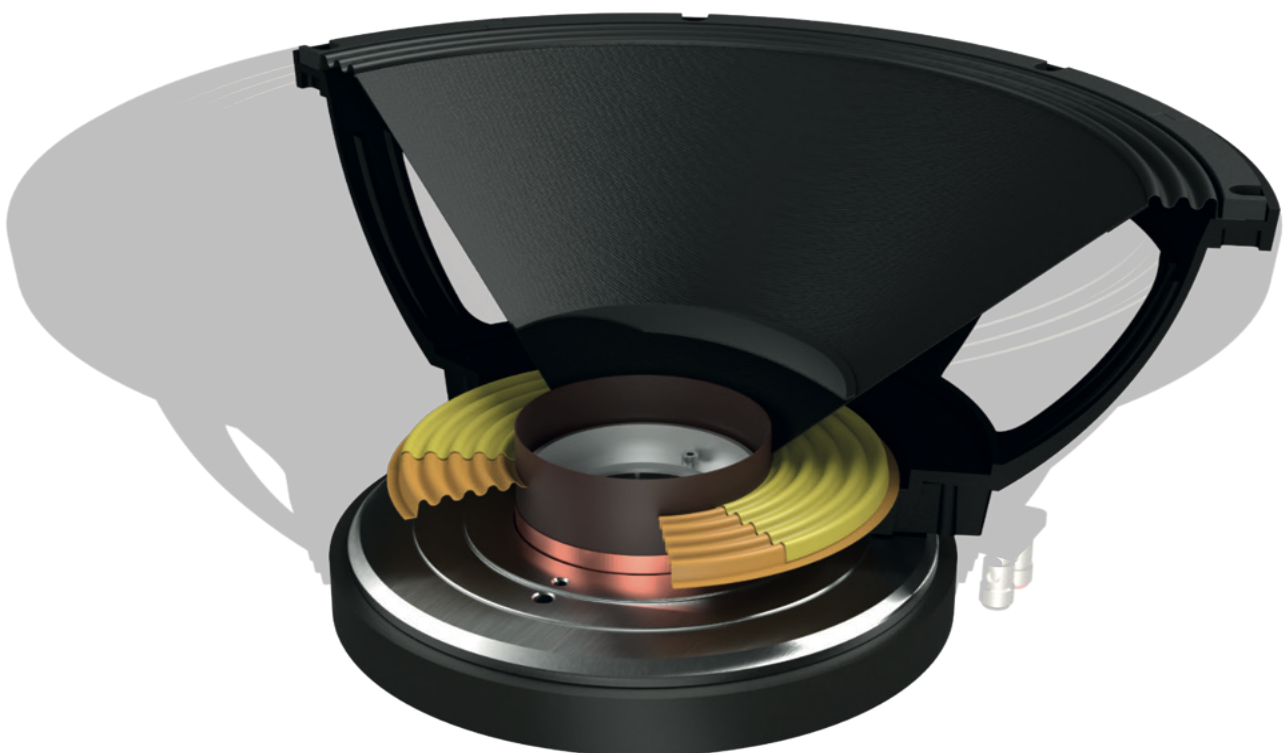
## Triple Voice Coil cooling systems

Imagine an absolute technology built to last. The Triple Voice Coil cooling systems ensure safe and secure working conditions, no matter how hard you push it.



## Double and triple sandwich systems

Less wear and tear is guaranteed because of the double and triple sandwich lower suspension featuring a silicone treatment.

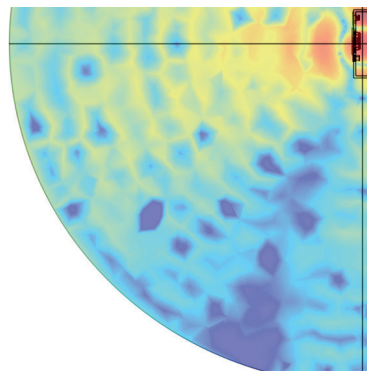


# SURROUND COVERAGE CONTROL TECHNOLOGY

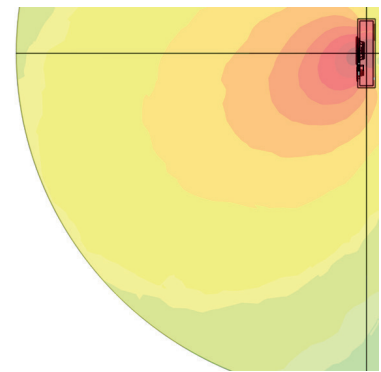


The HF horn with Surround Coverage Control Technology (SCCT) beams down directly to the listening position without tilting the speaker.

The reversed horn and woofer position allows for smooth coupling and even coverage throughout the room.



Classic HF horn on top design and its rippled coverage



Reversed HF horn position and its smooth coverage

## AIR ABSORPTION TECHNOLOGY (AAT)

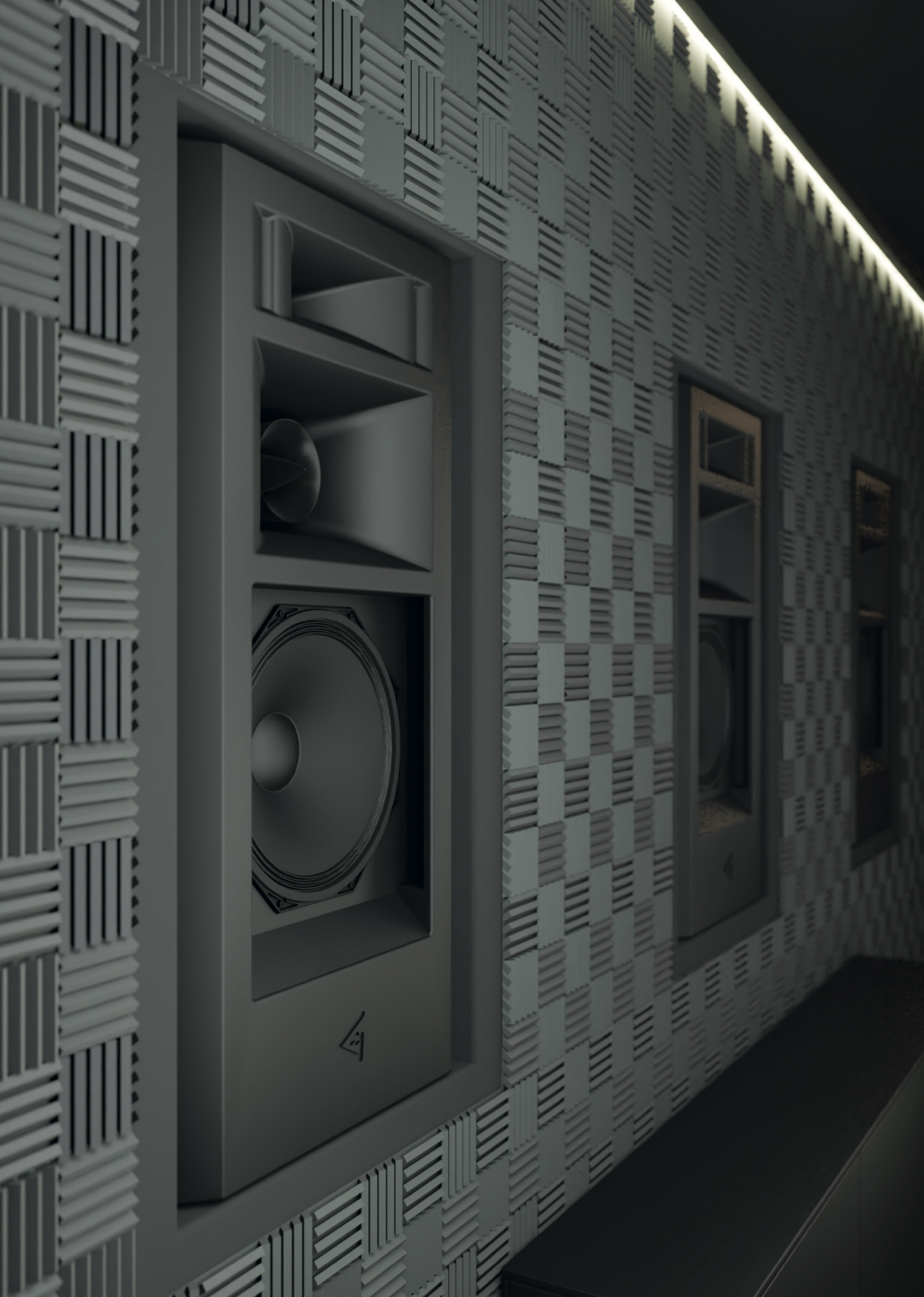
Our High-Frequency drivers are designed to deliver a perfect reproduction of speech frequency including a specifically designed absorption ring insert for magnet system.

## COPPER RINGS & ALUMINUM INSERTS

The copper rings of the High-frequency drivers allow to lower the distortions which helps to achieve unparalleled clarity and intelligibility.

The aluminum inserts in the magnetic system dramatically reduce the distortion while also improving the cooling off of the voice coil which significantly increases the reliability.







# MAIN SPEAKERS



# FALCON 46

## LED ready slim screen speaker

Introducing the FALCON 46: a pinnacle of home entertainment sophistication, ushering in a new era of immersive experiences that rival the brilliance of high-contrast direct view LED screens. Its cutting-edge 3-way design incorporates the finest components available, featuring ultra-low resonant TeXtreme® woofer cones for unparalleled audio quality.



The FALCON 46's compact form ensures seamless integration into the most confined spaces, while its versatile vertical and horizontal configurations make it ideal for placement above or beside your screen.



### FALCON 46

Frequency response ( $\pm 3$ dB)	50 - 18000 Hz
Frequency range (-10 dB)	45 - 20000 Hz
Max continuous SPL	117 dB
Sensitivity (1W/1m half-space)	93,5 dB
High-frequency driver	4 x dome tweeter (0,75-inch voice coil)
Mid frequency driver	4 x 2-inch midrange (0,75-inch voice coil)
Low frequency woofer	4 x 6,5-inch (1,4-inch voice coil) TeXtreme cone
Coverage	90° H / 40° V rotatable coverage pattern
Nominal impedance	4 Ohm
Power rating	300 W
Mounting	U-bracket
Connectors	Banana terminal
Dimension (W x H x D)	1010 x 195 x 196 mm
Net weight	12 kg

# TEXTREM - CARBON FIBER COMPOSITE

The groundbreaking TeXtreme technology redefines the standards of speaker design, delivering an auditory experience that transcends the ordinary. TeXtreme's advanced carbon fiber material, renowned for its ultra-lightweight yet incredibly rigid properties, minimizes distortion and enhances sound precision, ensuring that every note, every whisper, and every crescendo is captured with pristine accuracy.



With TeXtreme technology, your home cinema speakers are not just speakers—they are a gateway to a world of acoustic brilliance. Elevate your listening experience and indulge in the refined luxury that only TeXtreme can offer.

## VERSATILE HORIZONTAL AND VERTICAL



The revolutionary MHF section is designed to redefine the standards of speech range reproduction. Featuring four low-distortion 2" midrange drivers and four exquisite 1" dome tweeters, seamlessly integrated into a single, cohesive unit, this innovative design ensures flawless coupling and impeccable phase coherence. The MHF section's adaptable 90° rotation allows the Falcon 46 to deliver exceptional sound quality in both vertical and horizontal orientations, offering unrivaled versatility for the discerning audiophile.

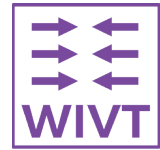
# TRUE IMAGE FOR EVERY HOME CINEMA



The Falcon 46 stands out for its remarkable versatility and adaptability, making it a perfect addition to any sophisticated audio setup. Its sleek and slender design seamlessly complements the latest LED direct view screens, offering a compact size and minimal visual footprint without compromising on powerful performance and precise coverage control. Simultaneously, owners of classic projection screens will revel in the pristine clarity and unmatched intelligibility that the Falcon 46 delivers.



# M15



## High-power main speaker array

The M15 flagman series represents, like the M12 Series, a whole new way to deliver the sound into a home theater with greater coverage too. Versions designed for left, right, and center channels have the optimal coverage to put the sound right where it belongs.



M15-L and M15-R have their sound axis panned to the left and right respectively, allowing to aim the sound right to the listening position without rotating the speaker itself.

	M15-C	M15-L	M15-R
Frequency response ( $\pm 3$ dB)	38 – 20000 Hz	38 – 20000 Hz	38 – 20000 Hz
Frequency response (-10 dB)	35 – 22000 Hz	35 – 22000 Hz	35 – 22000 Hz
Max continuous SPL	126,5 dB	126,5 dB	126,5 dB
Max peak SPL	132,5 dB	132,5 dB	132,5 dB
Sensitivity (1W/1m half-space)	98 dB	98 dB	98 dB
Color	Black	Black	Black
High-frequency driver	1-inch (1,75-inch voice coil) titanium dome		
Mid-range driver	6,5-inch (1,5-inch voice coil) horn loaded		
Low/Mid frequency woofer	15-inch (4-inch voice coil), glass fibre reinforced celluloid cone		
Coverage	90° H x 40° V Coverage Control HF horn horizontal axis panned straight	90° H x 40° V Coverage Control HF horn horizontal axis panned 15° left	90° H x 40° V Coverage Control HF horn horizontal axis panned 15° right
Nominal impedance	4 Ohm	4 Ohm	4 Ohm
Power rating	700 W	700 W	700 W
Connectors	Banana terminals	Banana terminals	Banana terminals
Mounting	4 x M8 points for antishock wall mounting	4 x M8 points for antishock wall mounting	4 x M8 points for antishock wall mounting
Dimension (W x H x D)	600 x 1205 x 305 mm	600 x 1205 x 305 mm	600 x 1205 x 305 mm
Net weight	45,6 kg	45,6 kg	45,6 kg

# M12



## High-performance main speaker array

The M12 series represents a whole new way to deliver sound into a home theater. Versions designed for left, right, and center channels have the optimal coverage to put the sound right where it belongs.

M12-L and M12-R have their sound axis panned to the left and right respectively, allowing to aim the sound right to the listening position without rotating the speaker itself.



Every M12 system is equipped with a powerful 12" long-excursion woofer and a precision HF driver with an extremely low level of distortion.

	M12-C	M12-L	M12-R
Frequency response ( $\pm 3$ dB)	50 – 20000 Hz	50 – 20000 Hz	50 – 20000 Hz
Frequency range (-10 dB)	45 – 22000 Hz	45 – 22000 Hz	45 – 22000 Hz
Max continuous SPL	121,5 dB	121,5 dB	121,5 dB
Sensitivity (1W/1m half-space)	97 dB	97 dB	97 dB
High-frequency driver	1-inch (1,75-inch voice coil) titanium dome		
Low/Mid frequency woofer	12-inch (2,5-inch voice coil) reinforced celluloid cone		
Coverage	90° H x 50° V Coverage Control HF horn horizontal axis panned straight	90° H x 50° V Coverage Control HF horn horizontal axis panned 15° left	90° H x 50° V Coverage Control HF horn horizontal axis panned 15° right
Nominal impedance	4 Ohm	4 Ohm	4 Ohm
Power rating	300 W	300 W	300 W
Connectors	Banana terminals	Banana terminals	Banana terminals
Mounting	4 x M8 points for antishock wall mounting	4 x M8 points for antishock wall mounting	4 x M8 points for antishock wall mounting
Dimension (W x H x D)	565 x 840 x 250 mm	565 x 840 x 250 mm	565 x 840 x 250 mm
Net weight	32,2 kg	32,2 kg	32,2 kg

# M8



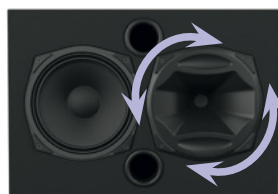
## Compact main speaker array

M8 is a compact screen speaker series designed for home cinemas and home theater systems. Precision 8" + 1" components offer impressive performance for the dynamic and engaging action.



Optionally available fabric grills make it easy to customize the look of the M8 series. Several mounting options allow for a wall or an in-wall installation.

M8-C is the dedicated center channel speaker, and it seamlessly couples with the M8-LR speaker in both vertical and horizontal mounting, offering an unparalleled immersive cinema experience.



	M8-C	M8-LR
Frequency response ( $\pm 3$ dB)	75 - 20000 Hz	75 - 20000 Hz
Frequency range (-10 dB)	65 - 22000 Hz	65 - 22000 Hz
Max continuous SPL	118,5 dB	118,5 dB
Sensitivity (1W/1m half-space)	95,5 dB	95,5 dB
High-frequency driver	1-inch (1,75-inch voice coil) titanium dome	1-inch (1,75-inch voice coil) titanium dome
Low/Mid frequency woofer	8-inch (2-inch voice coil) reinforced celluloid cone	8-inch (2-inch voice coil) reinforced celluloid cone
Coverage	90° H / 50° V rotatable coverage pattern	-30 +60° H / 50° V rotatable coverage pattern
Nominal impedance	4 Ohm	4 Ohm
Power rating	200 W	200 W
Mounting	VESA 100 x 100, 4 x M5 side points for specially designed mounting Removable grill	VESA 100 x 100, 4 x M5 side points for specially designed mounting Removable grill
Connectors	Banana terminals	Banana terminals
Dimension (W x H x D)	335 x 480 x 185 mm (w/ grill) 335 x 480 x 160 mm (w/o grill)	335 x 480 x 185 mm (w/ grill) 335 x 480 x 160 mm (w/o grill)
Net weight	8 kg	8 kg





# SURROUNDS AND CEILING



# S series

## Compact surround speakers

A new dimension of compactness and sound precision is made available with the Slim series – the ultra-compact speakers for small to medium-sized home cinemas.



A magnetic optional fabric grill is available for exterior customization which greatly simplifies its installation.

Surround speakers have well as brackets for wall or in-wall installation scenarios with VESA 100 x 100.



A high-frequency horn with Coverage Control Technology radiates directly to the listening position without the need to tilt the speaker.

Don't be misled by the size - the 4" woofer with long excursion rubber surround is capable of delivering convincing sound pressure even at the very bottom of the speaker's frequency range.



# S4

# S6



# S8



Theatron Surround Slim Speakers are characterized by particularly compact cabinet dimensions. This means more space and a better sound experience without compromise. Professional technology that is visible and audible

S4	
Frequency response ( $\pm 3$ dB)	100 – 20000 Hz
Frequency range (-10 dB)	95 – 21000 Hz
Max continuous SPL	105 dB
Sensitivity (1W/1m half-space)	88 dB
High-frequency driver	1" carbon fiber diaphragm, 1" voice coil neodymium magnetic system
Low/Mid frequency woofer	4" long excursion rubber surround, 1" voice coil
Nominal impedance	8 Ohm
Coverage Horizontal	60°-90° H
Coverage Vertical	+5 -35° V coverage control HF horn vertical axis tilted 15° down
Power rating	50 W
Mounting	VESA 100x100, 4 x M5 side points for specially designed mounting, removable grill
Connectors	Banana terminals
Dimension (W x H x D)	225 x 320 x 83 mm (w/ grill), 225 x 320 x 70 mm (w/o grill)
Net weight	3,6 kg

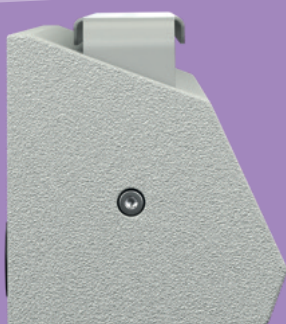
	S6	S8
Frequency response ( $\pm 3$ dB)	90 – 20000 Hz	75 – 20000 Hz
Frequency range (-10 dB)	85 – 22000 Hz	70 – 22000 Hz
Max continuous SPL	114,5 dB	118,5 dB
Sensitivity (1W/1m half-space)	94 dB	95,5 dB
High-frequency driver	0,75-inch (1,5-inch voice coil) titanium dome	0,75-inch (1,5-inch voice coil) titanium dome
Low/Mid frequency woofer	6-inch (1,75 inch voice coil) reinforced celluloid cone	8-inch (2 inch voice coil) reinforced celluloid cone
Coverage Horizontal	60°-90° H	60°-90° H
Coverage Vertical	+5 -35° V coverage control HF horn vertical axis tilted 15° down	+5 -35° V coverage control HF horn vertical axis tilted 15° down
Nominal impedance	4 Ohm	4 Ohm
Power rating	150 W	200 W
Mounting	VESA 100 x 100, 4 x M5 side points for specially designed mounting, removable grill	
Connectors	Banana terminals	Banana terminals
Dimension (W x H x D)	280 x 400 x 125 mm (w/ grill) 280 x 400 x 100 mm (w/o grill)	335 x 480 x 175 mm (w/ grill) 335 x 480 x 150 mm (w/o grill)
Net weight	6 kg	7 kg

# CS44



## Ceiling-mounted surround

MAG Theatron CS44 is the subcompact surround system designed for the smallest visual footprint inside your home cinema. Equipped with dual 4" woofers CS44 provides impact and performances rivaling much larger systems.



Included mounting bracket provides flexibility in tilt angle and multiple fixing holes for different installation scenarios.

The HF horn with Coverage Control Technology distributes the sound evenly across the listening area compensating for the tilted elevated speaker position.

CS44	
Frequency response ( $\pm 3$ dB)	95 - 20000 Hz
Frequency range (-10 dB)	90 - 22000 Hz
Max continuous SPL	110 dB
Sensitivity (1W/1m half-space)	90 dB
High-frequency driver	0,75-inch (1,5-inch voice coil) titanium dome
Low/Mid frequency woofer	two 4-inch (1,75 inch voice coil)
Coverage	60°-90° H / +5 -35° V coverage control HF horn vertical axis tilted 15° down
Nominal impedance	8 Ohm
Power rating	100 W
Mounting	Built-in mounting bracket
Connectors	Banana terminals
Dimension (W x H x D)	458 x 155 x 161 mm (w/ grill) 458 x 155 x 145 mm (w/o grill)
Net weight	6 kg

# SUBWOOFERS



# SBV-21



## High-performance subwoofers

Compact subwoofers are meant to deliver a new immersive depth into your cinema experience. Equipped with the SBV-21 sets a new benchmark for home cinemas, delivering the performance and immersive experience of a full-scale theater. At the heart of this powerful speaker is a state-of-the-art 21" woofer, featuring an impressive 4.5" high-diameter voice coil that completely eliminates thermal compression, ensuring consistent and reliable sound quality at all times.

Our innovative InvisiVent technology guarantees silent operation, preventing even the slightest screen movement caused by airflow, so you can focus solely on the cinematic experience. Additionally, the SBV-21 offers versatile installation options with its antishock mounting system, allowing for seamless integration into any home cinema setup.



	SBV-21
Frequency response ( $\pm 3$ dB)	22 - 150 Hz
Frequency response (-10 dB)	19 - 250 Hz
Max continuous SPL	128 dB
Sensitivity (1W/1m), dB	98 dB
Low frequency woofer	21-inch 4,5-inch voice coil glass-fiber reinforced cone
Nominal impedance	4 Ohm
Power rating	1000 W
Mounting	4 x M5 points for an antishock mounting
Connectors	Banana terminals
Dimension (W x H x D)	1150 x 1100 x 500 mm
Net weight	78 kg

# HAMMER

## High-performance subwoofers

Introducing the Hammer Series Subwoofers: redefining your cinematic experience with stunning, immersive depth. Featuring long-excursion drivers, these subwoofers deliver unparalleled precision in low-frequency sound.

The compact cabinet design incorporates a hybrid vented labyrinth, optimizing space while eliminating vent airturbulence for a pure audio experience. With glass-fiber reinforced cones, every component is meticulously crafted to ensure smooth frequency response and impressive sound pressure levels. Elevate your sound with the Hammer Series Subwoofers—where superior design meets exceptional performance.



	HAMMER-12	HAMMER-15
Frequency response ( $\pm 3$ dB)	22 - 120 Hz	18 - 120 Hz
Frequency response (-10 dB)	20 - 160 Hz	16 - 140 Hz
Max continuous SPL	121 dB	124 dB
Sensitivity (1W/1m), dB	92	94
Low frequency woofer	12-inch 3-inch voice coil glass-fiber reinforced cone	15-inch 4-inch voice coil sandwich cone
Nominal impedance	4 Ohm	4 Ohm
Power rating	800 W	1000 W
Connectors	Banana terminals	Banana terminals
Dimension (W x H x D)	565 x 840 x 256 mm	540 x 1205 x 305 mm
Net weight	36 kg	49 kg

CTA-210 RESULTS													
Model	Driver	Parametr	avg					avg					
Hammer-12	12"	Freq, Hz	80	40-63	63	50	40	20-31,5	31,5	25	20	18	16
		SPL, dB	128,5	125,4	127,5	125	123	118,1	121	120	109	101,5	95,5
Hammer-15	15"	Freq, Hz	80	40-63	63	50	40	20-31,5	31,5	25	20	18	16
		SPL, dB	134	128,9	132	129	124	120,6	121,5	121	119	112	108

# DBA

## Double bass array subwoofers

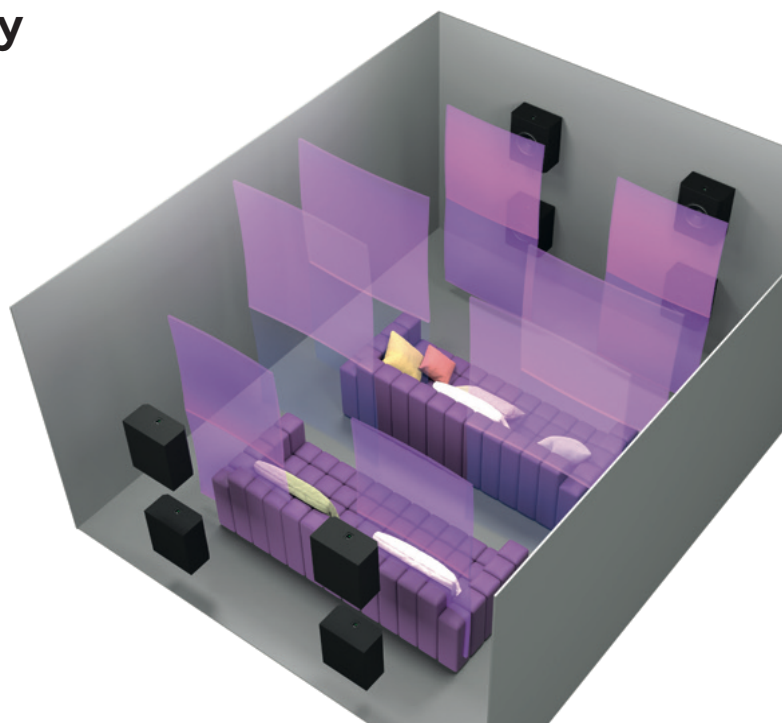


The DBA Series subwoofers are exquisitely engineered for double bass array setups, these subwoofers redefine sound performance with an unparalleled blend of power and precision. Our bespoke woofers, crafted with meticulous attention to detail, boast exceptionally low distortion and remarkable sensitivity. The advanced long-excursion suspension system extends the

range of linear movement, dramatically reducing distortion for a pure, immersive audio experience. Encased in a refined closed-box design, these subwoofers deliver a flawlessly smooth low-frequency response with minimal phase distortion, ensuring seamless installation and fine-tuning for any environment. Elevate your auditory senses with the DBA Series Subwoofers – where sophistication meets sonic excellence.

### Double Bass Array Technology

A Double Bass Array (DBA) is an advanced sound technology designed for home cinemas to deliver powerful and precise low-frequency audio. By using multiple subwoofers placed strategically at the front and rear of the room, a DBA minimizes room modes and standing waves, resulting in even bass distribution throughout the space. This setup ensures a more immersive and balanced audio experience, eliminating the boominess and dead spots typical in conventional subwoofer configurations.





# DBA-12

# DBA-15

# DBA-18

# DBA-21



	DBA-12	DBA-15
Frequency response ( $\pm 3$ dB)	33 – 200 Hz	30 – 150 Hz
Frequency range (-10 dB)	27 – 500 Hz	24 – 300 Hz
Max continuous SPL	116 dB	119 dB
Sensitivity (1W/1m half-space)	91 dB	93 dB
Low frequency woofer	12-inch (2-inch voice coil) rubber surround long-excursion woofer	15-inch (4-inch voice coil) ridged glass-fiber reinforced enclosure
Nominal impedance	4 Ohm	4 Ohm
Power rating	300 W	400 W
Connectors	Banana terminals	Banana terminals
Mounting	Antishock wall mounting adapters 4 x M5 points for floor mounting	Antishock wall mounting adapters 4 x M5 points for floor mounting
Color	Black	Black
Dimension (W x H x D)	565 x 845 x 250 mm	645 x 845 x 325 mm
Net weight	32 kg	39 kg

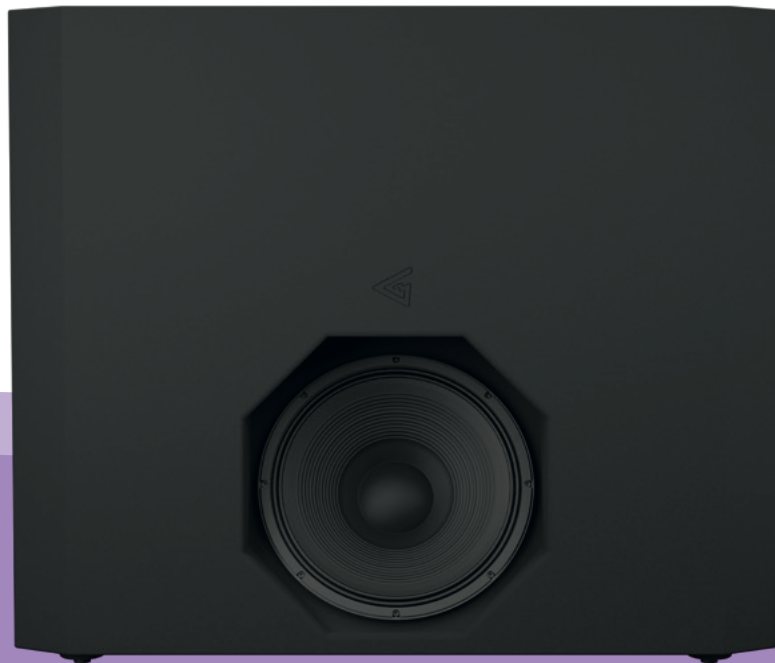
	DBA-18	DBA-21
Frequency response ( $\pm 3$ dB)	30 – 150 Hz	25 – 150 Hz
Frequency range (-10 dB)	24 – 300 Hz	20 – 300 Hz
Max continuous SPL	122,5 dB	127 dB
Sensitivity (1W/1m half-space)	95 dB	97 dB
Low frequency woofer	18-inch (4-inch voice coil) ridged glass-fiber reinforced enclosure	21-inch (4,5-inch voice coil) ridged glass-fiber reinforced enclosure
Nominal impedance	4 Ohm	4 Ohm
Power rating	600 W	1000 W
Connectors	Banana terminals	Banana terminals
Mounting	4 x M5 points for floor mounting	4 x M5 points for floor mounting
Color	Black	Black
Dimension (W x H x D)	700 x 840 x 395 mm	1000 x 1000 x 395 mm
Net weight	46 kg	56 kg

# THEATHOR-24

## Ultimate home cinema subwoofer

Reclaim the ultimate in-home Premiumcinemasubwoofers with the THEATHOR-24. Unveiling cinema infra-sub features surpassing the capabilities of standard subwoofers, it boasts a custom-built 24" woofer with remarkable linear movement.

Leveraging ingenious acoustic design, the THEATHOR-24 pushes the performance envelope with its tremendous impactful blast, accurate articulation, and immense power.



Designed for seamless integration, the THEATHOR-24 is exceptionally slim to fit snugly behind the screen, with the option for direct wall mounting using shock-absorbing brackets.

THEATHOR-24 has a ULTIMATE enclosure. A proprietary 3D tunnel cabinet design is called in to roll out the maximum output and lowest possible frequency threshold. At the same time, the depth is preserved very slim to easily fit even in the narrow space behind the screen.

The effective system of internal braces keeps the structure extremely rigid and is capable of withstanding the tremendous pressure that is mounted by the driver.

THEATHOR-24 has the ULTIMATE driver. The 24" driver inhabiting these subwoofers is the pinnacle of low-frequency reinforcement technology and know-how.

Double Demodulation Ring Technology offers supreme control over the harmonic distortion, allowing for clean and smooth performance and precision dynamics.

The magnet system is based on the 250 mm ferrite magnet ring providing massive energy for solid bottom-end performance.



The Triple Cooling Technology and large 4,5" three-layer voice coil ensure the best possible cooling and guarantee many hours of non-stop operation for years and years of carefree service.



### THEATHOR-24

Frequency range ( $\pm 3$ dB)	18 - 120 Hz
Frequency range (-10 dB)	16 - 140 Hz
Max continuous SPL (1W/1m)	135 dB
Sensitivity (1W/1m halfspace)	101 dB
Low-frequency woofer	24"-inch (4,5-inch voice coil) ridged glass-fiber reinforced cone
Nominal impedance	8 Ohm
Power rating	2500 W
Connectors	Banana terminal
Mounting	8 x M10 for transportation handles
Dimension (W x H x D)	1700 x 1460 x 600 mm
Net weight	207 kg
Color	Black

### CTA-210 RESULTS

Model	Driver	Parametr									
THEATHOR-24	24"	Freq, Hz	63	50	40	31,5	25	20	18	16	
		SPL, dB	135 (amp limiter)	135 (amp limiter)	135	135,5	132	128,5	121	117,5	

# THOR-Vi

## In-wall home cinema subwoofer

Experience the next evolution of our award-winning THOR series: introducing the THOR-Vi, the Ultimate Cinema Subwoofer. Elevate your home theater with this masterpiece that delivers unrivaled power and breathtaking low-frequency effects, all in a subtle, unobtrusive design that blends seamlessly into any space.

The THOR-Vi is equipped with a custom-engineered 12" long-excursion woofer, meticulously designed for the ultimate audio experience. With its remarkably slim profile, the THOR-Vi is effortlessly integrated into your walls, providing a discreet yet commanding presence.



THOR-Vi	
Frequency response ( $\pm 3$ dB)	17 – 160 Hz
Frequency response (-10 dB)	15 – 200 Hz
Max continuous SPL	124 dB
Sensitivity (1W/1m half-space)	96 dB
Low frequency woofer	12-inch (4-inch voice coil) ridged glass-fiber reinforced enclosure
Nominal impedance	4 Ohm
Power rating	600 W
Connectors	Banana terminals
Dimension (W x H x D)	2300 x 680 x 360 mm
Net weight	88,6 kg

CTA-210 RESULTS											
Model	Driver	Parametr									
THOR-Vi	12"	Freq, Hz	80	63	50	40	31,5	25	20	18	16
		SPL, dB	116,8 (amp limiter)	114,4 (amp limiter)	118,7 (amp limiter)	116,8 (amp limiter)	117,5	118	118	114	109



# ULTIMATE SCREEN WALL ARRAY

# AVALON

# AVALON

## Ultimate Screen Wall Array



Indulge in the ultimate luxury of a home cinema experience reimagined. The Ultimate Screen Wall Array offers an exquisite front speaker ensemble that transcends sound limits, enveloping you in a symphony of opulence.

At its core, the Ultimate Screen Wall Array boasts bespoke components meticulously crafted for unrivaled auditory excellence. With their lightweight yet ultra-rigid full carbon cones, the woofers deliver remarkable transients and a deep, powerful bass that resonates with precision.

The mid-range section, expertly engineered, provides a flawless reproduction of the spoken word, seamlessly blending the lines between reality and illusion.

Elevating high-frequency performance to an art form, the Air Motion Transformer captures the zenith of audio technology, offering an unmatched clarity and transparency that immerses you fully into the soundscape, transforming your listening into a truly sublime experience.



## AVALON SUB

## AVALON TOP C

## AVALON TOP L

## AVALON TOP R



	AVALON TOP C	AVALON TOP L	AVALON TOP R
Frequency response ( $\pm 3$ dB)	38 – 22000 Hz	38 – 22000 Hz	38 – 22000 Hz
Frequency range (-10 dB)	32 – 25000 Hz	32 – 25000 Hz	32 – 25000 Hz
Peak SPL	131 dB	131 dB	131 dB
Sensitivity (1W/1m half-space)	98 dB	98 dB	98 dB
High-frequency driver	6,5" Air Motion Transformer	6,5" Air Motion Transformer	6,5" Air Motion Transformer
Mid frequency driver	4" titanium dome 4" VC driver	4" titanium dome 4" VC driver	4" titanium dome 4" VC driver
Low frequency woofer	15" long excursion woofer, 3" voice coil, carbon cone 15" passive radiator	15" long excursion woofer, 3" voice coil, carbon cone 15" passive radiator	15" long excursion woofer, 3" voice coil, carbon cone 15" passive radiator
Nominal coverage	100° H x 40° V Coverage Control MF and HF horns straight horizontal axis	100° H x 40° V Coverage Control MF and HF horns horizontal axis panned 15° left	100° H x 40° V Coverage Control MF and HF horns horizontal axis panned 15° right
Nominal impedance	4 Ohm	4 Ohm	4 Ohm
Power rating	500 W	500 W	500 W
Connectors	Banana terminals	Banana terminals	Banana terminals
Dimension (W x H x D)	450 x 1100 x 370 mm	450 x 1100 x 370 mm	450 x 1100 x 370 mm
Net weight	80 kg	80 kg	80 kg

## AVALON SUB

Frequency response ( $\pm 3$ dB)	30 – 150 Hz
Frequency range (-10 dB)	24 – 250 Hz
Peak SPL	132 dB
Sensitivity (1W/1m half-space)	96 dB
Low frequency woofer	21-inch long excursion suspension 4" voice coil woofer, carbon cone
Nominal impedance	4 Ohm
Power rating	1000 W
Connectors	Banana terminals
Dimension (W x H x D)	660 x 1320 x 360 mm
Net weight	85 kg





# AMPLIFIERS

series



# TDC

## DSP amplifiers

Discover the elegance and simplicity of TDC amplifiers, a premier choice for high-end home cinema enthusiasts. This 2-channel amplifier combines superior performance with effortless usability, ensuring a seamless integration into any home setup. With its intuitive Web UI, TDC amplifiers provide comprehensive control at your fingertips, allowing you to fine-tune room EQ, adjust channel delays and volumes, and monitor system status with ease. Designed for both convenience and precision, TDC amplifiers offer an unmatched audio experience, embodying the perfect blend of sophistication and functionality. Experience the art of sound redefined with TDC.



**TDC-1200W**

**TDC-3200W**

	TDC-1200W	TDC-3200W
Frequency range	20 Hz - 20 kHz	20 Hz - 20 kHz
Channel count	2	2
Nominal power, per channel, 4 Ohm load	600 W	1600 W
Nominal power, per channel, 8 Ohm load	400 W	1100 W
Nominal power, two channels bridged, 8 Ohm load	1200 W	3200 W
Nominal power, two channels bridged, 16 Ohm load	600 W	1600 W
Amplifier	Class D high efficiency	
DSP audio controls	6-band parametric EQ, volume, polarity, delay	
DSP utility controls	Power saving mode, power-up mode	
Input sensitivity	+5dBu	+7dBu
Maximum input level	+20dBu	
Input impedance	18 kOhm unbal., 36 kOhm bal.	
Crosstalk separation	85 dB @ 1 kHz	
THD	<0,5% from 0,1 W to full power (typical <0,01%)	
Power consumption, 1/8 of max output power @ 8 Ohm	220 VA	600 VA
Damping factor, 8 Ohm	> 10000 @ 100 Hz	> 500 @ 100 Hz
S/N ratio	100 dB	
Connectors	2x RCA unbal. input, 2x XLR female bal. input, 2x XLR male bal. output, 4-pin Banana speaker terminal, RJ-45 Ethernet	
Dimensions (W×H×D)	486 x 88 x 294 mm, 2U	
Net weight	5,25 kg	5,9 kg

# TQ

## DSP amplifiers

Experience the epitome of luxury in high-end sound technology with TQ amplifiers, crafted to elevate your home cinema experience to unparalleled heights. Each TQ amplifier delivers four channels, each capable of up to 2000W of pure, powerful sound, ensuring every note and nuance is brought to life with breathtaking clarity. Featuring the sophisticated Theatron Web UI, you have complete command over every detail of the signal processing flow, allowing for a tailored and immersive audio experience. With cutting-edge cooling and heat dissipation systems, TQ amplifiers remain cool and whisper-quiet, even when operating at peak performance, offering an exceptional blend of power, precision, and poise. Indulge in the ultimate sound experience with TQ – where innovation meets luxury.



**TQ-3000W**



**TQ-4000W**



**TQ-8000W**

	TQ-3000W	TQ-4000W	TQ-8000W
Frequency range	16 Hz - 24 kHz	16 Hz - 24 kHz	16 Hz - 24 kHz
Channel count	4	4	4
Nominal power, per channel, 4 Ohm load	750 W	1000 W	2000 W
Nominal power, per channel, 8 Ohm load	400 W	750 W	1000 W
Nominal power, two channels bridged, 8 Ohm load	1400 W	2000 W	3000 W
Nominal power, two channels bridged, 16 Ohm load	700 W	1000 W	2000 W
Amplifier	Class D high efficiency		
Web UI	Theatron Web UI		
Input sensitivity	+16 dBu / +4 dBu		
Maximum input level	+22 dBu / +10 dBu		
Input impedance	10 kOhm unbal., 20 kOhm bal.		
Crosstalk separation	100 dB @ 1 kHz		
THD	<0,5%		
Power consumption, 1/8 of max output power @ 8 Ohm	400 VA	500 VA	1000 VA
Damping factor, 8 Ohm	> 500 @ 100 Hz		
S/N ratio	108 dB		
Connectors	8x XLR bal. input, 2x 4-pin Phoenix speaker terminals, RJ-45 Ethernet, RJ-45 AES3 input, 2x 3,5" TRS trigger in/out		
Dimensions (W×H×D)	486 x 87 x 505 mm, 2U		
Net weight	8,2 kg	8,2 kg	9,7 kg

**INTEGRATE UNLIMITED**



**Address: U3/26 Rushdale Street, Knoxfield, VIC 3180**

**Phone: 1300 991 981**

**Email: [info@iunlimited.au](mailto:info@iunlimited.au)**

**Web: [www.iunlimited.au](http://www.iunlimited.au)**